



Power Transmissions Marine Applications

Kumera Drives Oy

Kumera Getriebe GmbH

Kumera Antriebstechnik GmbH

Kumera (China) Co., Ltd.

Kumera AS, Helseth AS

▪ Finland

▪ Germany

▪ Austria

▪ China

▪ Norway



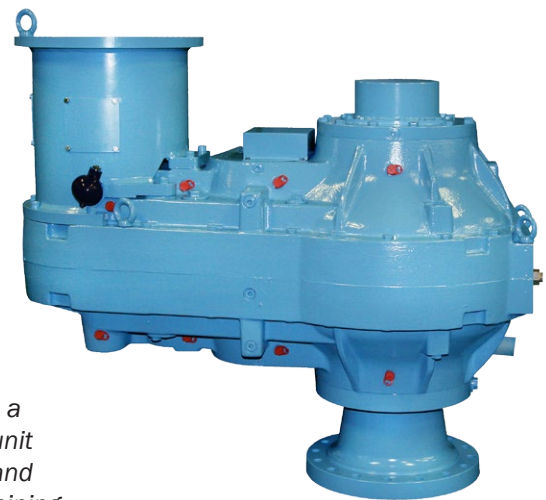
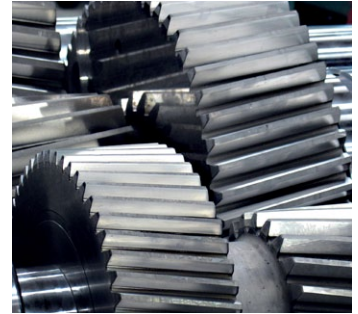
Kumera

KUMERA

Kumera Drives Oy Riihimäki, Finland

Kumera Drives Ltd, Finland, is a parent company of Kumera Power Transmission Group. The expertise of Kumera Drives is focused on pulp and paper, mining and mineral industries. Understanding the requirements for drives in the process industry, combined with innovative R&D operations, has kept us as one of the major players in the power transmission sector in the world. One goal of all our operations is to improve the customers' efficiency in their processes by using innovative power transmission solutions.

We are carrying out our product development work in close collaboration with our customers, original equipment manufacturers (OEMs), research institutes and end-users. This cooperation enables us to adapt the latest technology and new demands set for power transmissions equipment.



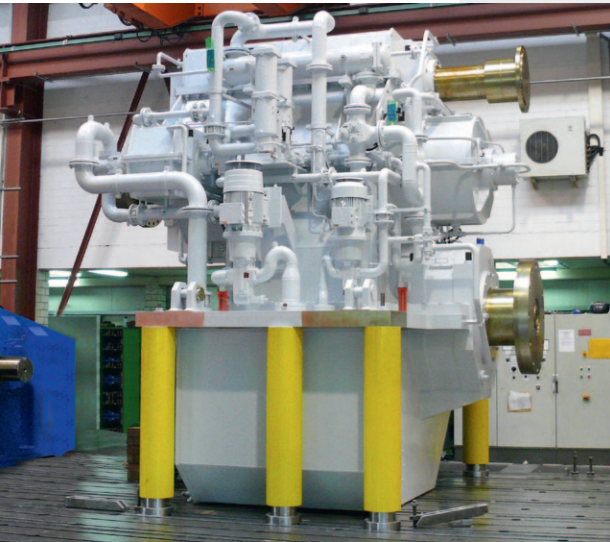
Kumera Drives is a prominent gear unit supplier in pulp and paper industry, mining and mineral industry and various materials handling.



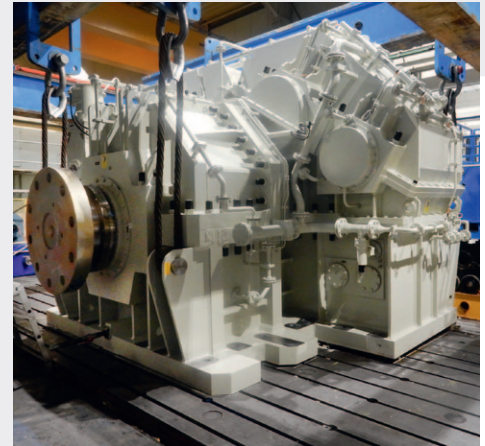
Kumera Getriebe GmbH

Troisdorf, Germany

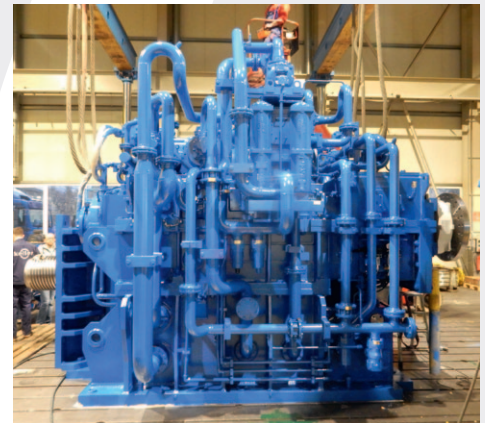
Kumera Getriebe GmbH continues the long tradition of high-quality and large-dimensioned Keller gearboxes, the roots of which are in the early years of the 20th century. The product range covers tailor-made gearboxes for dredging applications as well as gear units for cement, sugar, steel, plastics, open cast mining and the shipping industries, and related drive components.



*Propeller 14.400 kW and
Generator 10,000 kW*



Cutter Gearbox; 2x2.300 kW



*Dredge Pump Gearbox; 12.000 kW
(two shifted gearbox)*



Gearbox for Rolling Mill



Mixer Gearbox

Kumera Antriebstechnik GmbH

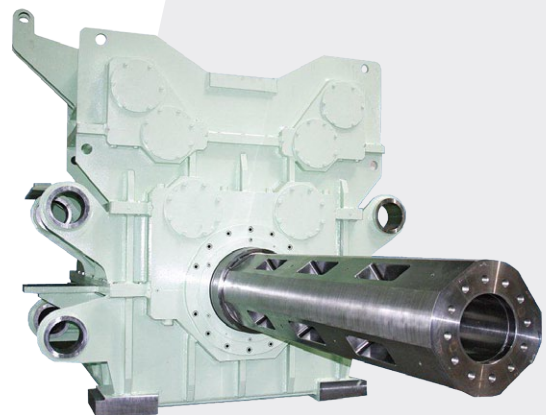
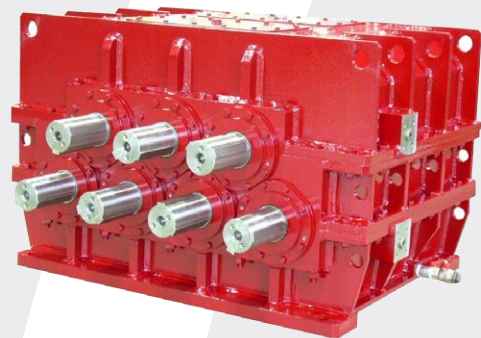
Graz, Austria

Kumera Antriebstechnik GmbH represents long industrial traditions in mechanical workshop industry and conforms to the latest gear manufacturing technology. With high competence and long experience the company provides optimized solutions on a high quality level.

Kumera Antriebstechnik GmbH serves customers by supplying gears, tailor-made gearboxes and complete customized drive units. Beside the expertise in supplying yankee cylinder drives for paper machines the company produces special gearboxes for power sawing, rolling mills, hydro-power and many other applications.



New Generation Yankee cylinder drive



KUMERA (China) Co., Ltd.

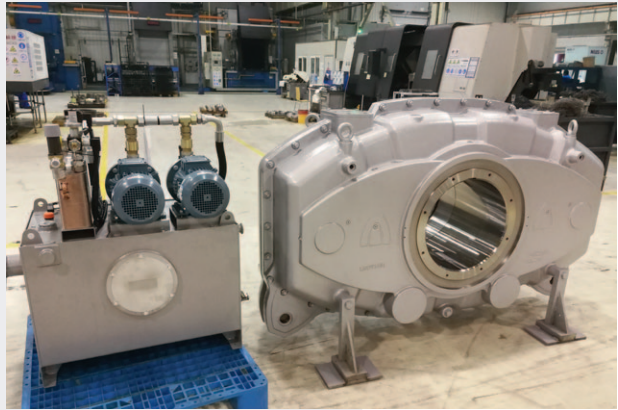
Kunshan, Jiangsu province

Kumera (China) Co., Ltd. is a 10 years old resource within Kumera Corporation serving local customers in China. The plant is a fully equipped gear factory comprising modern machinery including milling and grinding capacity, a heat treatment facility and a painting booth.

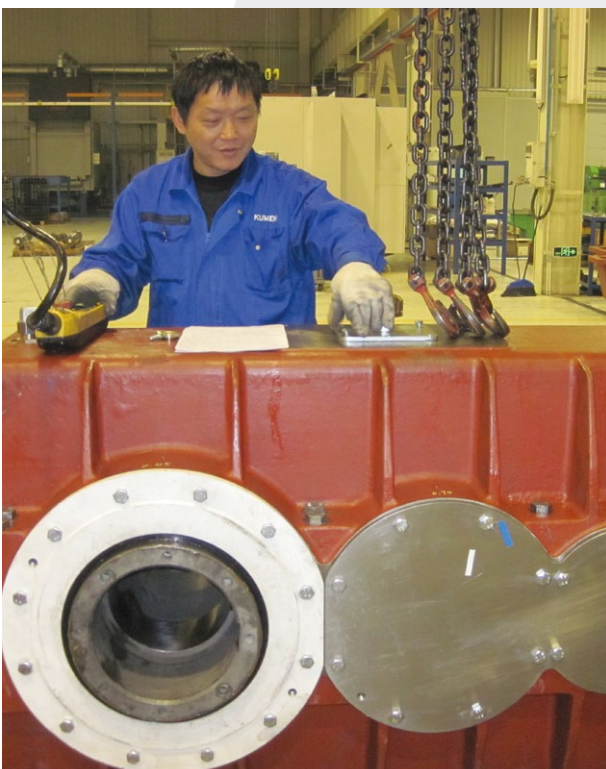
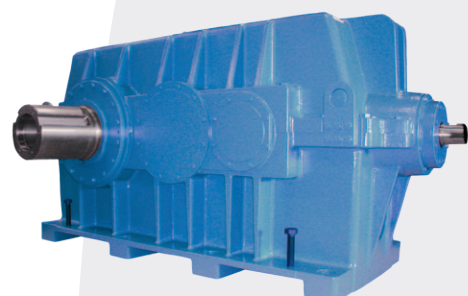
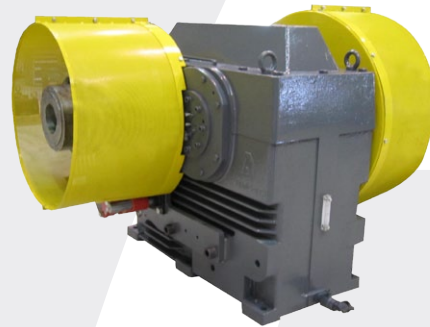
The product offering includes middle-sized and large gearboxes for the specific industries with either standard or tailor-made solutions.

The plant enjoys a favourable location on the east coast being 50 km from Shanghai with good access by train and highway connections.

Kumera (China) acts as Central hub location for the service activities for Asian markets having most spare parts available at the Kunshan plant as well as competent service personal.



Cumera gearbox for Yankee-cylinder drive.





Front-end gearboxes for tugs and offshore vessels, drives for propulsion and offshore fire water pumps, are applications included in the NORGEAR range of marine transmissions from Kumera AS.



Kumera AS

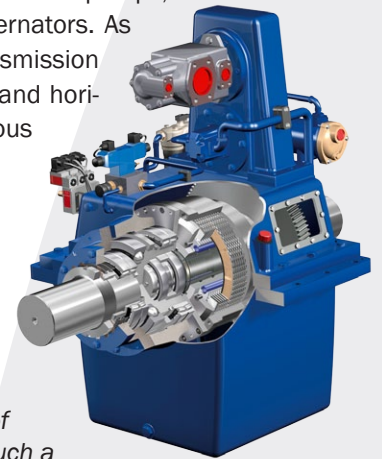
Sandefjord, Norway

Kumera AS in Norway is our marine transmission division of the Power Transmission Group. The NORGEAR brand has a long established record in marketing and manufacturing of marine transmissions.

Tugs and offshore support vessels, utilizing the power of the main engines via front-end gearboxes are the core market for Kumera NORGEAR products. The range of gearboxes includes PTO solutions for various auxiliary drives, with emphasis on designs for fire-fighting vessels.

In 2010 Kumera introduced the NORGEAR HYBRID Green Gear, where our gearbox is placed in the shaft line, guiding both diesel- and electrical power to the propulsion. This will enable fuel and maintenance savings and reduced NO_x/CO_2 when in standby- or transit mode.

The NORGEAR HYBRID gear comes with a well proven soft engagement clutch, which secures a smooth engagement of the propulsion units, and optional integrated Fi-Fi pumps, deck machinery pumps and shaft alternators. As a typical standard Kumera Power Transmission product it is available in both vertical and horizontal shaft offsets, suitable for various design of engine room installations.



Since the beginning of the hybrid-technology trend Kumera AS has been engaged in this field. By developing tailored gearboxes to be part of a hybrid propulsion system, we ensure our place at the fore-front of this development. One reference for such a specialized product is the combined propulsion and multi-PTO gearboxes.

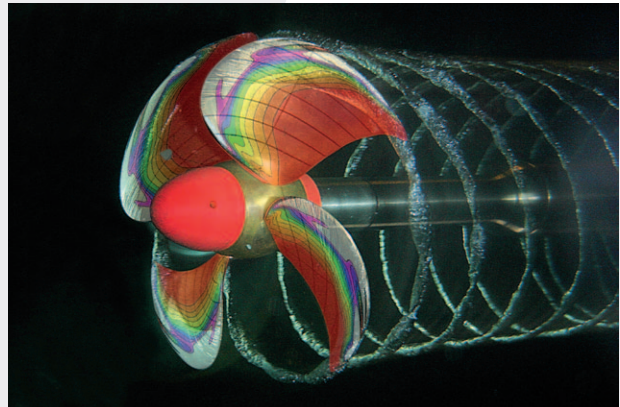


Helseth AS

Hjelset, Norway

Helseth AS is a highly specialized propeller manufacturer, operating in modern facilities in Molde, Norway. Helseth serves a wide variety of small and medium-sized professional vessels, such as cargo and passenger vessels, ferries, tankers, work boats, high-speed vessels, fishing and offshore vessels.

Optimized propeller design is a key factor for the overall efficiency. Three-dimensional and dynamic analysis methods facilitate the propeller design process and enable us to find the optimum tailor-made solution for our customers.



Offering examples of Kumera Power Transmission Group



HIGHSPEED GEARBOX FOR TEST BENCH



LH-TYPE GEARBOX



INDUSTRIAL GEARBOX ASSEMBLING



TD-SERIES GEARBOX



GEARBOX FOR YANKEE-CYLINDER DRIVE



GEARBOX FOR ROLL DRIVE



GEARBOX FOR HYDROPOWER



SPECIAL GEARWHEEL



KUMERA ACTIVE DRIVE



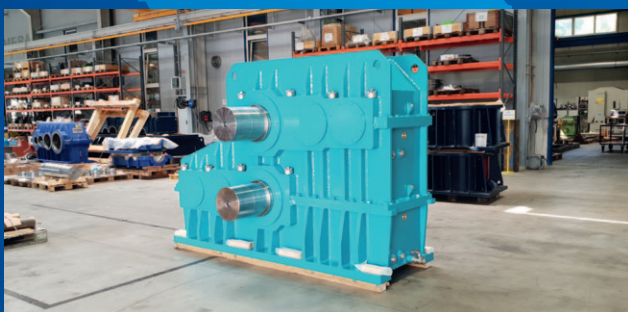
TAILOR-MADE GEARBOX BY KUMERA



LEM-SERIES GEARBOX



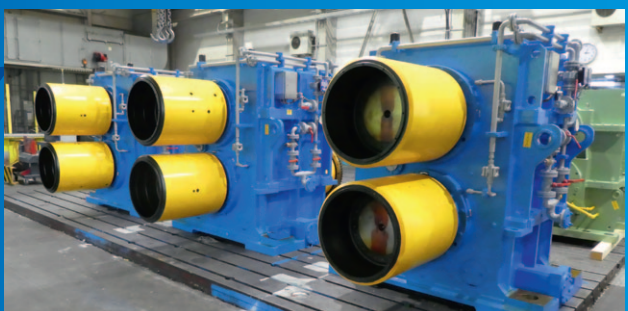
CONVEYOR GEARBOX



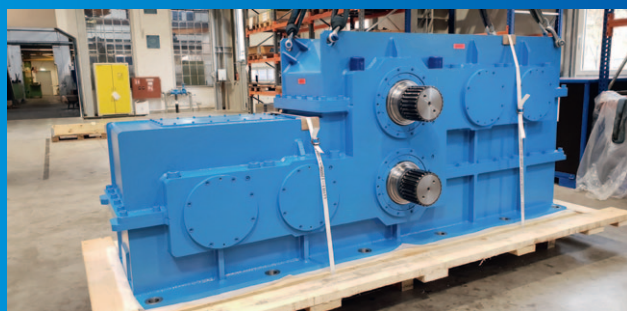
GEARBOX FOR ROLLING MILL



HASPEL GEARBOX



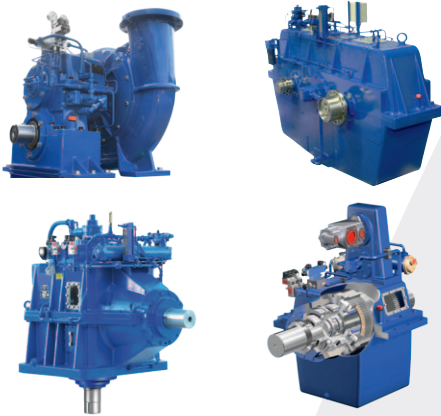
GEARBOX WITH TWO OUTPUT SHAFTS



HEAVY DUTY GEARBOX FOR STEEL INDUSTRY

Offerings of Kumera Marine Division

Front-end and propulsion gearboxes by Kumera AS

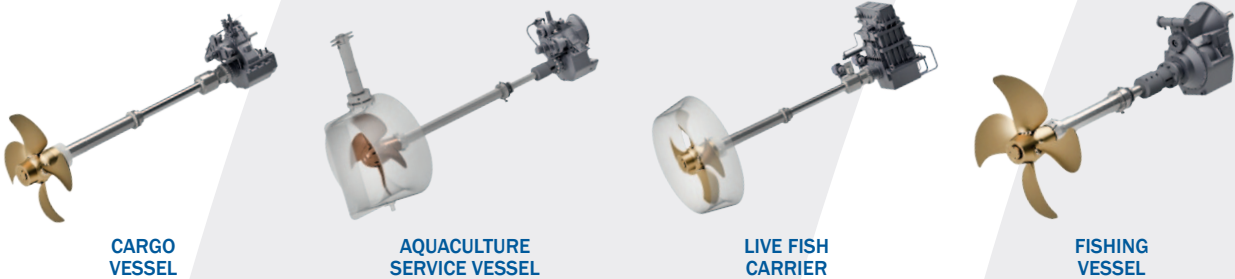


Gearboxes for propulsion systems and offshore applications by Kumera Getriebe GmbH



Propellers by Helseth AS

Application – Conventional Vessels



CARGO VESSEL

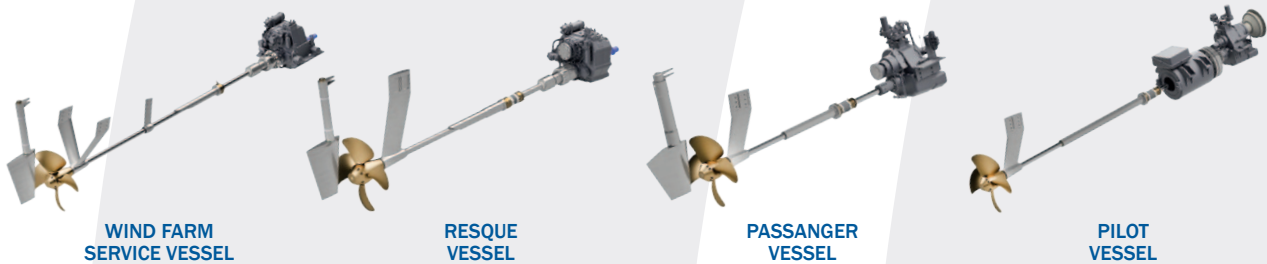
AQUACULTURE SERVICE VESSEL

LIVE FISH CARRIER

FISHING VESSEL



Application – High Speed Vessels



WIND FARM SERVICE VESSEL

RESQUE VESSEL

PASSANGER VESSEL

PILOT VESSEL



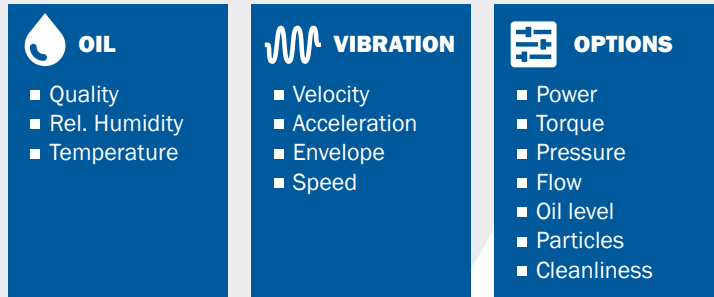
Kumera After Sales Support

Kumera Gearbox Lifecycle Management

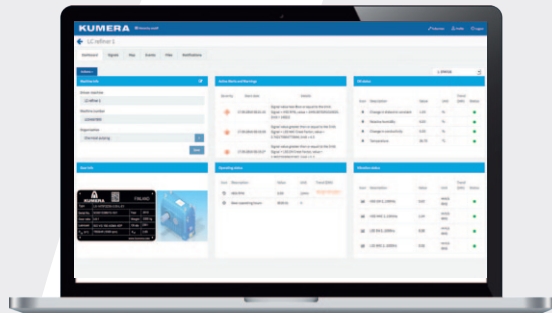
Kumera recognizes its responsibilities through the entire lifecycle of its products. The product lifecycle management is based on the principles of environmental and social aspects, which are essential to Kumera in its operations.



Health Monitoring



101011



Power-Plaza - Health Portal
• Online Dashboards



Kumera Specialist



Operators, Maintenance personnel



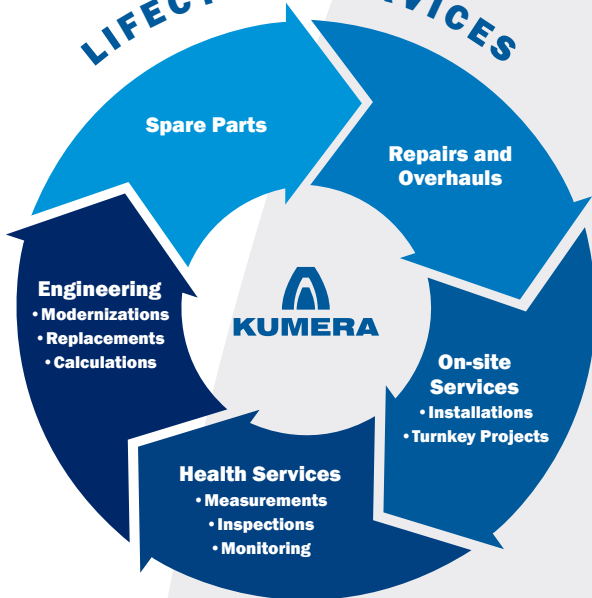
Equipment Manufacturer



Process Control System

← - - - → Wireless → Wired

LIFECYCLE SERVICES

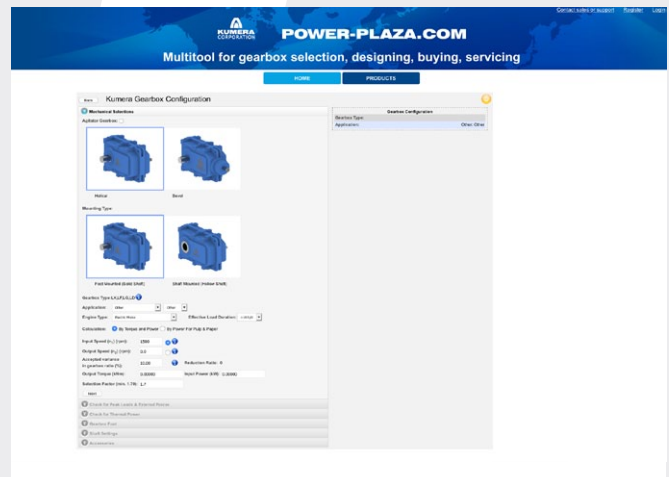
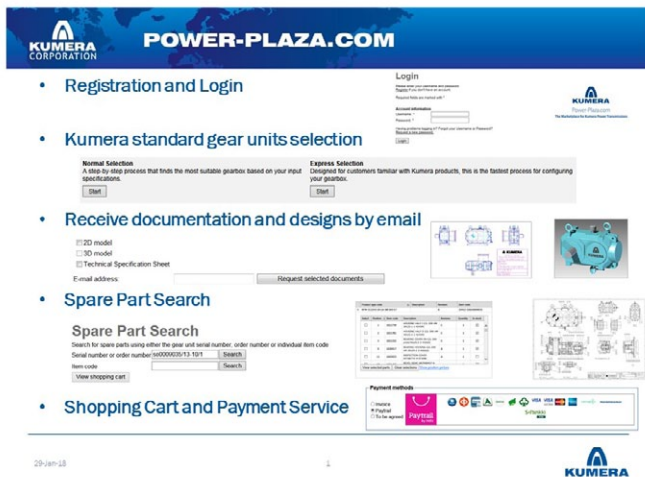


Kumera Power Plaza

Kumera Power-Plaza is a sophisticated portal to serve our gearbox customers. This platform is basically offering all features needed to assist the engineering stage to select proper drive unit and all its documentation to be placed on machinery or equipment blueprint. The ordering with accurate information on time of delivery for selected gearbox and price are included.

All after-sales documents, such as Material Certificates, Test-Protocols, Bill of Materials (BoM) and Assembly Drawings for spare parts ordering including information on their availability on stock, can be collected from power-plaza.com.

POWER-PLAZA.COM
Multitool for Gearbox
selection, designing, buying, servicing





Kumera Technology Division & Foundry



KUMERA TECHNOLOGY CENTER
RIIHIMÄKI, FINLAND



KUMERA MACHINERY OY
AKAA, FINLAND



PEIRON OY STEEL FOUNDRY
KOKEMÄKI, FINLAND

Kumera Power Transmission Group and Marine Division



KUMERA DRIVES OY
Kumerankatu 2
FI-11100 Riihimäki
FINLAND
Tel: +358 20 755 4200
E-mail: drives@kumera.com



KUMERA (CHINA) CO, LTD.
168 Meifeng Road
Kunshan 215300, Jiangsu
CHINA
Tel: +86 512 503 61701
E-mail: kumerachina@kumera.com



KUMERA GETRIEBE GMBH
Bonner Straße 38
D-53842 Troisdorf
GERMANY
Tel: +49 2241 988-0
Email: kumera.getriebe@kumera.com



KUMERA AS
P.O. Box 2043
N-3202 Sandefjord
NORWAY
Tel: +47 33 48 54 54
E-mail: sales@kumera.no



KUMERA ANTRIEBSTECHNIK GMBH
Raiffeisenstrasse 38-40
A-8010 Graz
AUSTRIA
Tel: +43 316 471 524-0
E-mail: kumera.graz@kumera.com



HELSETH AS
Baklivegen 11-13
N-6450 Hjelset
NORWAY
Tel: +47 71 202 900
Email: helseth@helseth.no



KUMERA
CORPORATION

KUMERA CORPORATION

HEADQUARTERS

FI-11100 Riihimäki

Finland

Tel.: +358 20 755 4200

Email: kumera@kumera.com