



For decades, Kumera has been known as a global leader in industrial and marine gear solutions, with more than a hundred thousand Kumera gear units installed at customer locations around the world.

Kumera AS in Norway, responsible for all the maritime business, has supplied more than 7500 Norgear marine transmissions, and Kumera's solutions are well known for their quality and reliability.



*Creating Efficiency*

## Service & Aftersales

- Professional service and technical support 24/7
- OEM know-how and spare parts
- Avoid off-hire through preventive maintenance
- Support for reliable and low cost gearbox operation
- Training of ship crew for first line maintenance

**24 hours service: +47 95 24 64 60**

## Contact

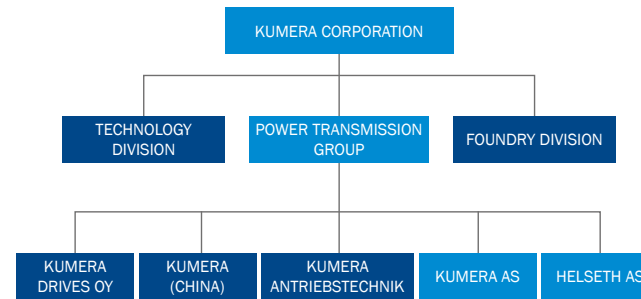
**General inquiries**  
 +47 33 48 54 54  
 sales@kumera.no  
 www.kumera.no

**Visiting address**  
 Kumera AS, Gneisveien 11, 3221 Sandefjord, Norway

**Postal address**  
 Kumera AS, Po.Box 2043, 3202 Sandefjord, Norway

## Kumera corporation

Kumera AS in Norway is part of the privately owned Finnish Kumera corporation.



A financially strong and dedicated power transmissions specialist.



Mechanical Power Transmissions for Marine and Offshore



www.kumera.no  
 +47 33 48 54 54

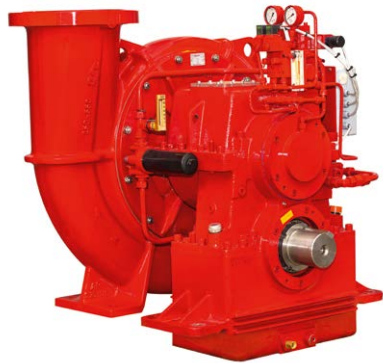
**Maritime segment**  
**Norway**

# External firefighting

## Class I, II & III

The Kumera Norgear Fi-Fi transmissions, tried and tested for more than 50 years, are probably the most renowned in the world.

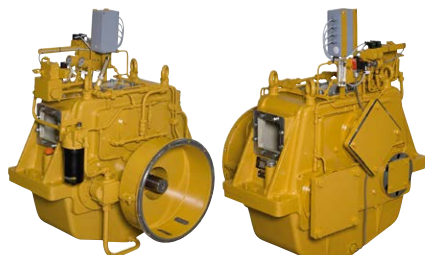
- Compact design integrating gear transmission, clutch and pump, 1 unit/ 1 foundation
- Freestanding transmission and pump also available as standard
- First class monitors and control system
- System design engineering
- Approval by all major classification societies



# Auxiliary drives

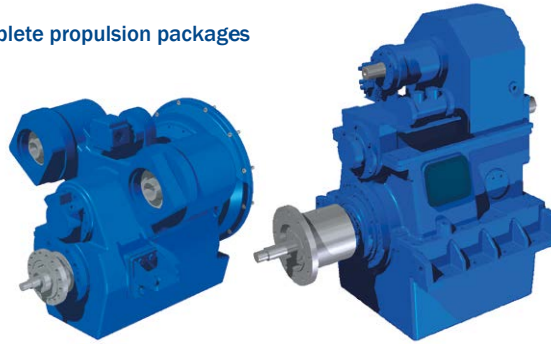
Wide range of standard models, easily adapted to your specific project.

- Single and multiple shaft PTO gearboxes for hydraulic pumps, water pumps, generators etc.
- Bevel gearboxes (right angle), for thrusters and off-shore Fi-Fi pumps
- Shaft generator transmission for 2-stroke engines



# CP-Propulsion

## Complete propulsion packages



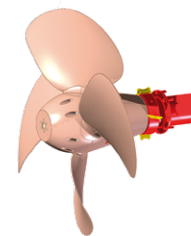
- Reduction gear, PTO/PTI options
- Propeller, CPP & APP
- Propeller shaft
- Stern tube
- Control system
- Hydraulic Power Pack
- Propeller Nozzle
- Intermediate shafts
- Journal bearings
- Shaft brackets
- Options & Accessoires

### CPP

- Up to Ø4400 mm
- Up to 4500 kW

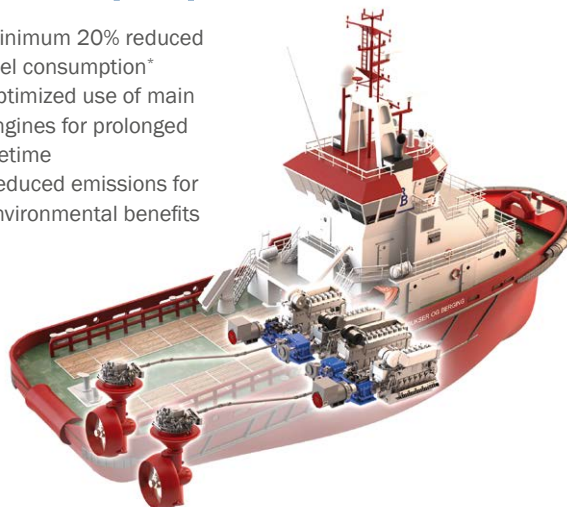
### APP

- Up to Ø2200 mm
- Up to 1700 kW



# Hybrid propulsion

- Minimum 20% reduced fuel consumption\*
- Optimized use of main engines for prolonged lifetime
- Reduced emissions for environmental benefits



# Custom gearboxes

## Tailor made designs for your application

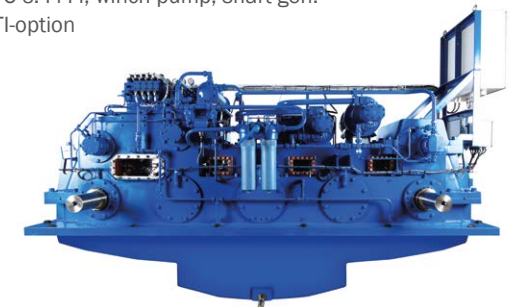
- Different number and type of power sources
- Specified power
- Multiple transmission ratios
- Specified number of PTOs
- Multiple built-in hydraulic clutches

The illustrated system of right angle gears and propeller is supplied to a new-build twin-screw vessel. The top gear features clutch for main drive, clutch for 1 PTO and has another two fixed PTO's. The lower gear features hub pitch servo (OD-Box) for propeller blade control.



### Gearbox details

- Twin-input
- 2-Speed gearing for azimuth prop.
- PTO's: Fi-Fi, winch pump, shaft gen.
- PTI-option



\* Depending on the complete system set-up and operational profile